

# COVID-19

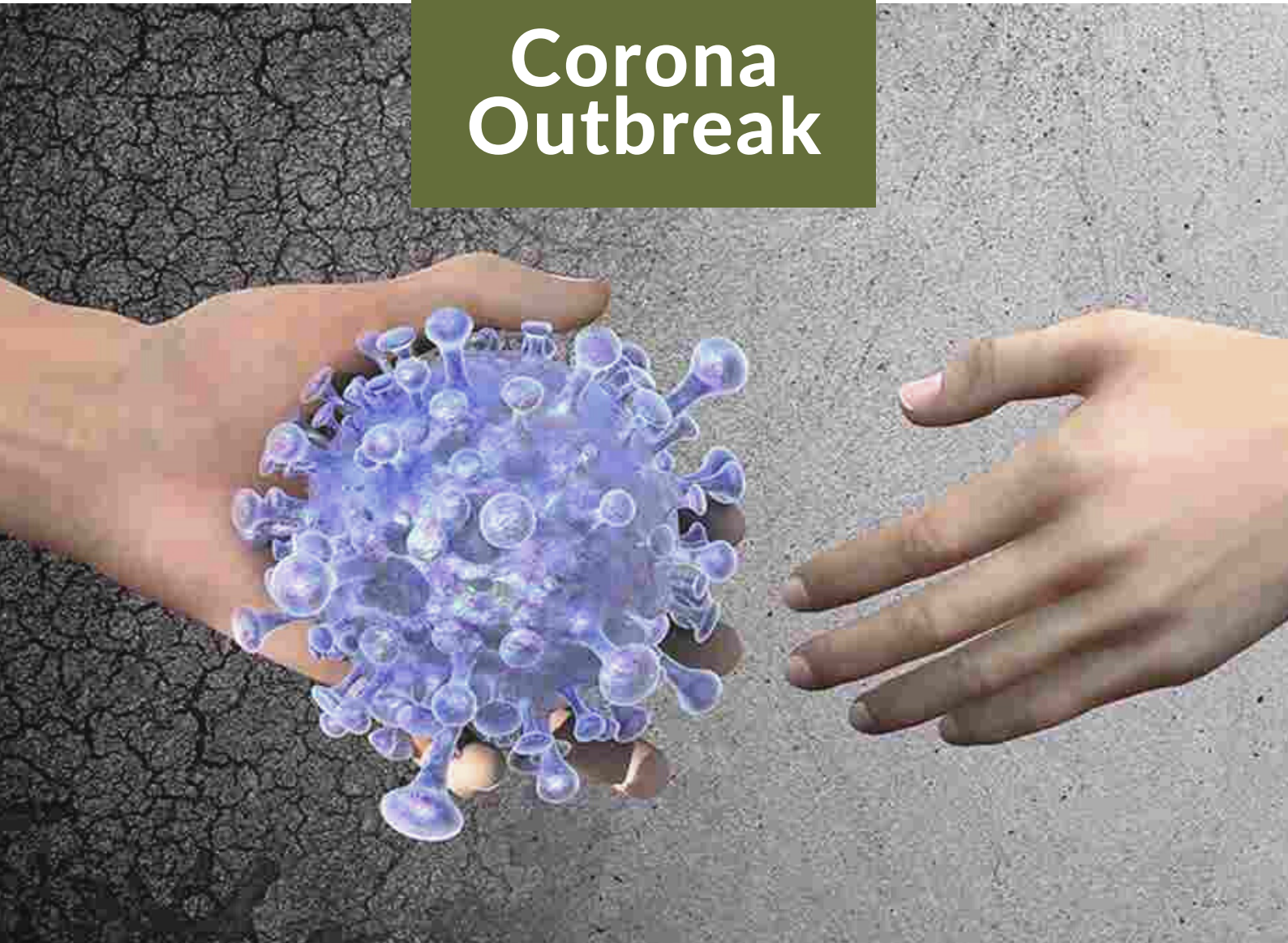
A detailed illustration of COVID-19 virus particles. The background is a light yellowish-green. In the foreground, there are two large, spherical virus particles covered in numerous small, dark, irregular spikes. Several long, thin, and slightly curved spikes extend from the surface of these particles. The overall style is scientific and illustrative.

## Brief Information

MINISTRY OF FOREIGN AFFAIRS  
OF THE REPUBLIC OF INDONESIA

COVID-19

# Corona Outbreak



## Indonesia Anticipates Outbreak

To prevent the spread of the Coronavirus Novel (nCoV) that occurred in China, the Indonesian Ministry of Health took precautionary measures by preparing thermo scanner at 135 entry points to Indonesia, setting up 132 designated hospitals in Indonesia to handle emerging infectious diseases, preparing logistics, setting up laboratories, and Center for Environmental Health Engineering.

Visitors do not have to worry because the Indonesian government has taken swift precautions to prevent the spread of the nCoV to Indonesia.

"Health Officers in 135 entry points by air, sea or land will detect body temperature with a thermo scanner. If the body temperature is above 38 degrees Celsius, then the posture will turn red on the thermo scanner," according to the Director General of Disease Prevention and Control, Ministry of Health of the Republic of Indonesia, dr. Anung Sugihantono, M. Kes at a press conference held on Monday, January 20, 2020.

Airports throughout Indonesia have increase alertness of the thermal scanners, providing health alert cards,

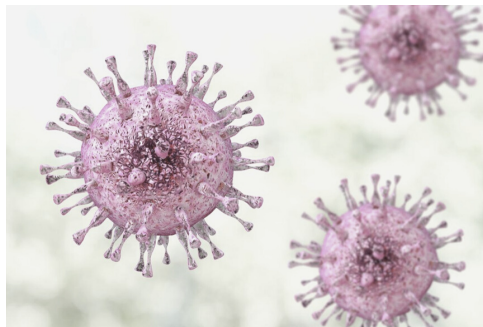
and providing health information and education for passengers.

Furthermore, Indonesia has suspend entry or transit in Indonesia for visitors/travelers who have traveled to certain regions of Iran, Italy and South Korea for the last 14 days.

**MINISTRY OF FOREIGN AFFAIRS  
OF THE REPUBLIC OF  
INDONESIA**

# FAQ

## FREQUENTLY ASKED QUESTIONS PNEUMONIA NOVEL CORONA VIRUS (2019-nCoV) (COVID-19)



### Numbers of coronavirus cases

#### Globally

634.835 confirmed  
29.957 deaths  
202 countries/territories  
(as of 30 March 2020)

#### Indonesia

1285 confirmed  
- 112 foreign citizens  
114 deaths  
- 5 foreign citizens' deaths  
(as of 30 March 2020)

### ▼ Can I visit Indonesia?

Besides China, the Indonesian Government has decided to suspend the incoming foreign visitors/ travelers who have traveled to the following countries/cities/regions/ territories in the last 14 days:

- **South Korea.** City of Daegu and Province of Gyeongsangbuk-do.
- **Iran**
- **Italy**
- **Holy See**
- **Spain**
- **France**
- **Germany**
- **Switzerland**
- **United Kingdom**

Furthermore, Indonesia has suspended its visa exemption policy for short-stay visit, visa on arrival and diplomatic/service visa free facilities for all countries for 1 month as of March 20, 2020.

Every foreigners/travelers who wish to visit Indonesia must provide health certificate issued by the relevant health authority and obtain visa from an Indonesian mission in accordance with the purpose of the visit .

Press Statement of the Minister of Foreign Affairs on March 2,  
March 5 and March 17, 2020



### ▼ What is the requirements of the Visitor Visa or Temporary Stay Visa?

- A not-contracted COVID-19 medical statement issued by the local government's health authority (in English)
- the applicant must have stayed for 14 (fourteen) days in areas in China which is not affected by COVID-19 outbreak
- Statement of willingness to enter quarantine for 14 (fourteen) days in facilities provided by the Indonesian government, or stop/transit for 14 (fourteen) days in other countries which not affected by coronavirus before entering the Indonesian territory

Ministerial Regulation of Law and Human Rights of the Republic of Indonesia Number 7 of 2020

# FAQ

## FREQUENTLY ASKED QUESTIONS PNEUMONIA NOVEL CORONA VIRUS (2019-nCoV) (COVID-19)

### Is there any restriction for foreign aircraft to enter, overfly or land in Indonesia's territory?

Indonesia has placed temporarily restrictions for aircraft which has a route from or to any airport in China (excluding Macau and Hong Kong) before entering Indonesia's airspace.

### My government decide to evacuate our citizens in Indonesia, how to request a clearance for the evacuation flight?

The Embassy or airline representative shall submit a clearance request for humanitarian assistance flight through [fcas.kemlu.go.id](https://fcas.kemlu.go.id)

### My diplomatic/official stay permit has expired while I was abroad due to entry restriction from the Government of Indonesia. What should I do?

Based on the Minister of Legal Affairs and Human Rights Regulation No. 7 of 2020, you can enter Indonesian territory by showing your diplomatic/official ID Card and certificate of health to the immigration officer. You are advised to renew the diplomatic/official stay permit immediately after entering Indonesian territory.

### What should foreign visitors do in the case of symptoms?

The Government of Indonesia have designated 132 hospitals throughout Indonesia to treat those suspected by corona virus. Therefore, the foreign visitors can make a visit to the nearest designated hospitals.

[https://covid19.kemkes.go.id/download/132\\_RS\\_Rujukan\\_PIE\\_Edit\\_Final\\_SK\\_MK\\_2.pdf](https://covid19.kemkes.go.id/download/132_RS_Rujukan_PIE_Edit_Final_SK_MK_2.pdf)



# FAQ

## FREQUENTLY ASKED QUESTIONS PNEUMONIA NOVEL CORONA VIRUS (2019-nCoV) (COVID-19)

### Will the Indonesian Government cover the hospital and medical bill for foreigners tested positive of COVID-19?

The Indonesian Government will cover the cost and medical bills of any patient indicated transmitted to be positive COVID-19. The budget has been allocated by the Indonesian Ministry of Health as the spread of COVID-19 has become an extraordinary health phenomenon. It is stipulated in the Decree of the Minister of Health No. HK.01.07/MENKES/104/2020.

### If a diplomat or family member be infected or suspected for virus, this person may not exit Indonesia, right?

In order to avoid the spread of the disease, those who are infected should be quarantined and treated by the authorized personnel and shall not leave the country.

### Where can the foreign mission ask for more information about Corona Virus?

Kindly contact 1500-362 or 119 ext 9 for more information or COVID-19

### How does the foreign embassy/consulate contact its citizens if they suspected having covid-19?

In case there are suspected COVID-19 patients who are being treated at the appointed hospitals, the ministry of health will contact their embassies to inform them about the whereabouts of the patients and their conditions.

# FAQ

## FREQUENTLY ASKED QUESTIONS PNEUMONIA NOVEL CORONA VIRUS (2019-nCoV) (COVID-19)

### How does the Indonesian Government assist foreigners confirmed with COVID-19 at sub-national level?

The foreigners may contact any nearest hospital. The Ministry of Foreign Affairs encourages all foreign missions to disseminate its hotline number to their nationals. If needed, the contact point, as aforementioned above, is ready to give further assistance to the foreign missions.

### Who will be in charge or responsible if foreign national detained at an Airport connected with the suspected Covid-19?

Person suspected with COVID-19 will be sent to designated hospital for treatment. The Ministry of Health will contact the relevant embassy to inform about the location of the patients and their conditions

### How do we find whether foreign nationals are infected with Covid-19?

In case there are suspected COVID-19 patients who are being treated at the appointed hospitals, the ministry of health will contact their embassies to inform them about the whereabouts of the patients and their conditions.

# FAQ

## FREQUENTLY ASKED QUESTIONS PNEUMONIA NOVEL CORONA VIRUS (2019-nCoV) (COVID-19)

Has the Ministry of Foreign Affairs issued any advice or recommendations for its missions (diplomats and the family members) abroad?

Indonesian diplomats and family members who work in other countries should follow the advices and regulations from its accredited countries.

What kind of information should be available on the health certificate to be accepted by the Indonesian Government?

The health certificate should be written in English and stating that the traveler is in healthy condition prior to travelling to Indonesia. It should state that the traveler is fit to travel and Free from respiratory infections symptoms (fever, cough, sore throat, sneezing, short of breath). It should be issued at the maximum 7 days before departure date and should be valid during check-in.

How do we keep track of changing travel guidance to and from Indonesia - who is the primary source of information?

kindly monitor announcements by relevant authorities such as the Ministry of Health and the Ministry of Foreign Affairs.

Will the Indonesian Government publish COVID-19 situation reports in line with WHO guidance?

The information and situation report related to COVID-19 outbreak in Indonesia is available on <https://infeksiemerging.kemkes.go.id/>.

# FAQ

Many countries are closing schools and implementing other containment measures, will Indonesia impose similar policies? Who makes this decision?

Ministry of Education in cooperation with local governments will assess the outbreak and will take necessary measure, including suspension of school activities. This policy will be implemented at local level.

Will the Indonesian government inform the public about cases outside of Jakarta?

Indonesia has appointed special spokesperson for COVID-19. Daily media briefing is conducted to disseminate any latest information related to COVID-19.

The elderly and those with underlying health conditions are most at risk for illness or death, how are you prioritizing these more at-risk populations with your response?

We recognize that they are the most vulnerable group against the COVID-19. The assistance and treatment will be provided according to their medical conditions. Priority is given to those who require the most medical attention and care.



# FAQ

If I am a Diplomatic Officer (residing in Jakarta), a national of a country which is suspended to enter Indonesia. I've travelled to a third country whose entry to Indonesia is not suspended and planning to return to Indonesia. Can I enter Indonesia?

Yes, you can. However, you must obtain a health certificate from the country you are flying from, stating you are negative COVID-19 and that you are fit to fly.

## Can the VIP room at the Soekarno Hatta International Airport still be used?

The VIP facilities in Jakarta and other provincial area in Indonesia will be temporarily closed and all passengers will be directed through the normal terminal lane to go through the health inspection procedure.